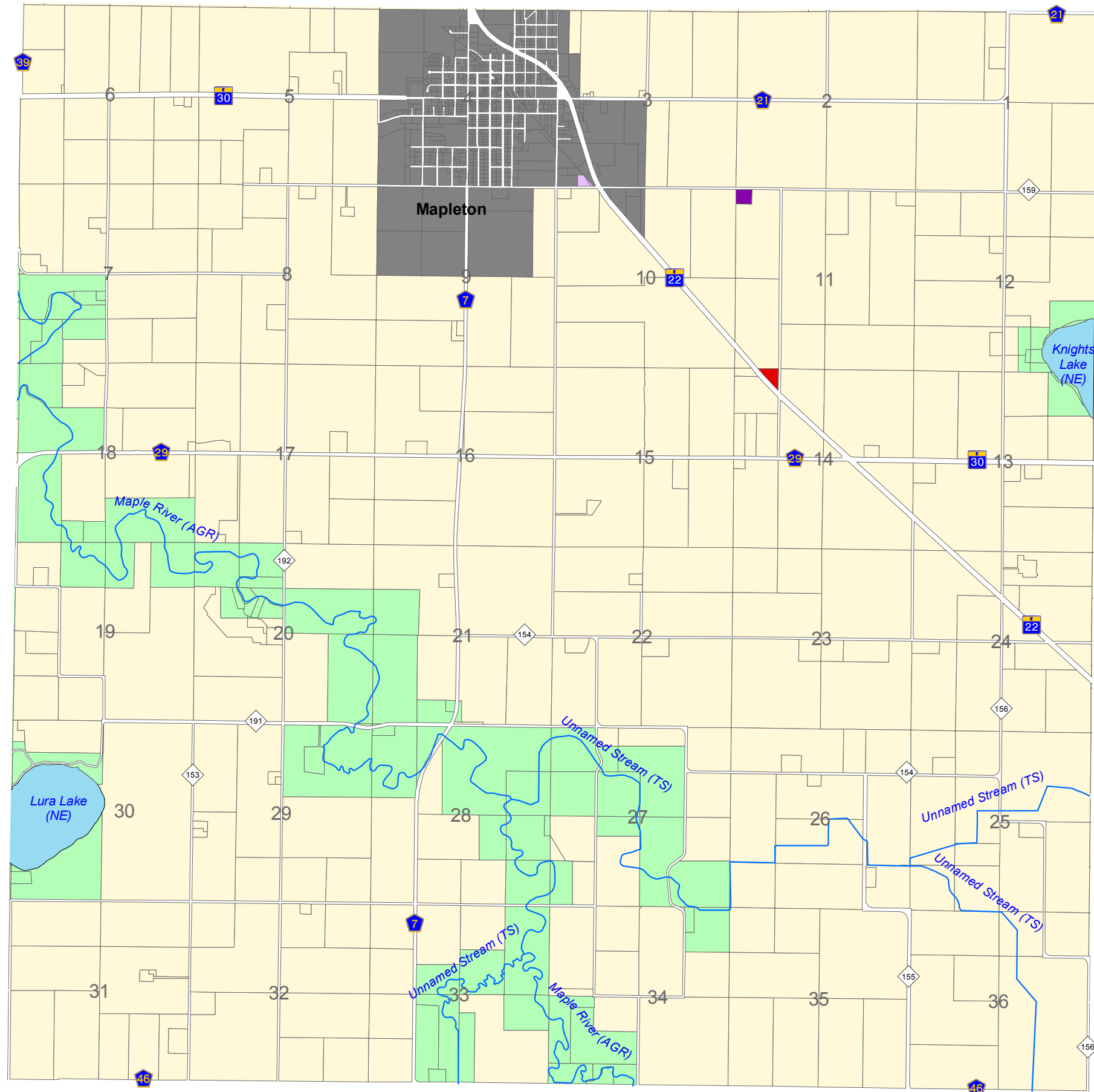


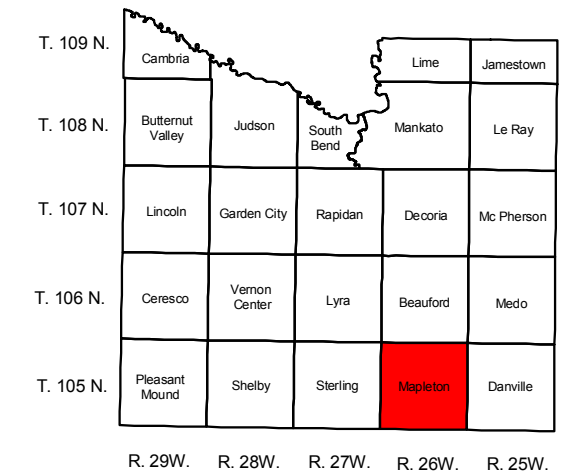
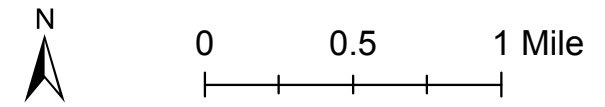
# Mapleton Township Zoning Map



## ZONING DISTRICTS

- Agriculture
- Conservation
- Rural Residence
- Rural Townsite
- General Business
- Highway Business
- Light Industry
- Heavy Industry

- Right of Way
  - Municipality
  - Lake
  - Protected River or Stream
  - Railroad
- Shoreland Classifications - Lakes*  
 GD = General Development  
 RD = Recreational Development  
 NE = Natural Environment
- Shoreland Classifications - Rivers*  
 AGR = Agricultural River  
 TR = Transitional River  
 TS = Tributary Stream



Approved: February 15, 2005  
 Effective: March 17, 2005  
 Prepared By: Blue Earth County Environmental Services  
 Revised: April 24, 2007

*Disclaimer: This map does not represent a survey of the land. The zoning districts on this map reflect approved zoning changes through January 31, 2005. Zoning districts are subject to official amendments and the zoning designations shown on this map must be interpreted by the County Code and County Policy. Questions regarding zoning districts or interpretation of this map should be directed to the County Planning Department. This map was prepared using the County's GIS and is based on the County's Parcel Data maintained by the County Mapping Department. While the County believes that the data is accurate, the County does not warrant that data in the GIS is error free and the County does not represent that the GIS data can be used for purposes such as navigation or any other purpose requiring the exact measurement of distance and direction or the precise depiction of geographic features. This disclaimer is pursuant to Minnesota Statutes 466.03 Subd 21. The user of this map acknowledges that the County shall not be liable for any damages that may arise from this map or the information it contains.*